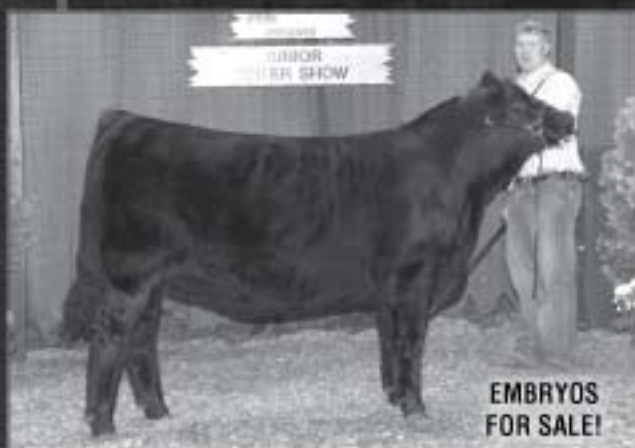


# MAKING THE DONOR PEN

Legacy's Uniqua



DBL Blk • DBL Pld  
Purebred  
CE: 5  
BW: 1.8  
WW: 51  
YW: 85  
MA: 24  
CM: 0  
SC: 0.5

MAGS Starbucks x Legacy's Stella

Uniqua is a third-generation product of our program. This very successful show heifer is now doing a great job in production. We are excited about her recent flush to AUTO Black Dakota and TC Stockman 365, the resulting progeny are on the way.

TASF Yecca 542Y



Blk • DBL Pld  
Purebred  
CE: 6  
BW: 3.4  
WW: 45  
YW: 88  
MA: 21  
CM: 4  
SC: 0.3

EXLR New Generation 071M x EXLR Rebeca 044U

Yecca is an exciting young female who shows great promise. She is a granddaughter of the great EXLR Rebeca 606M donor. We have embryos progeny on the way by CJSI Windfall and TC Stockman 365 that should be spectacular.



Udder of DF Rapture daughter

The DF Rapture daughters are doing a tremendous job in production and all have udders just like this. Producing females and show prospects like this are FOR SALE.

Look for our showstring this summer and fall.  
EMBRYOS & SHOW PROSPECTS FOR SALE

Thanks to the programs who purchased LEGACY genetics this past year,  
We bid all our junior customers success on the show circuit.

Call, come by or visit our website to see our offering.

## LEGACY FARMS LIMOUSIN

Joan & Randy Meyer

18241 Inring Rd. • Witt, Illinois 62094 • 217.594.7758 • Jordan & Stephanie Ruppert • mobile: 217.827.2564

[www.legacyfarmscattle.com](http://www.legacyfarmscattle.com)